

# Infrared Cooking Tops

The 700XP range is comprised of over 100 models designed to guarantee the highest level of performance, reliability, energy saving, safety standards and ergonomic operation. These concepts are reflected throughout the line in its modularity, construction and numerous configurations: countertop (on base or table), free-standing, on concrete or stainless steel plinth, bridged or cantilever. Thanks to its advance technology and premium performance, 700XP is a perfect solution for institutions of small sizes with limited footprint as well as restaurants needing to obtain the most from the kitchen space. The models detailed in this sheet are Infrared Cooking Tops.



371024

## EASY TO INSTALL

- Main connections can be accessed via the rear of the unit.
- Access to all components from the front.
- Provided with a service duct to facilitate installation and can be mounted on table tops, open base cupboards bridging or cantilever supports

## EASY TO CLEAN

- 6 mm thick Ceran® glass cooking surface lying flush to the stainless steel frame of the working top for smooth pan movement and ease of cleaning.
- One piece pressed worktop in 1,5mm stainless steel with smooth, rounded corners.
- Exterior panels in stainless steel with Scotch Brite finish.

- All models have right-angled, laser cut side edges to allow for the flush-fitting of units side-by-side thus eliminating gaps and possible dirt traps.

## EASY TO USE

- The infrared cooking top provides a powerful, fast, efficient and easy to clean solution for all cooking needs.
- Appliance featuring independently controlled infrared zones 230 mm in diameter, with 2,2 kW of power allowing immediate heat transfer to the pot/pan.
- Concentric radiant elements, allowing selection of the heating area to match the pot/pan size.
- Warning light to indicate residual heat on the radiant

- surface for greater operator safety.
- Low heat dissipation to the kitchen.

## EASY TO MAINTAIN

- IPX4 water protection.
- The special design of the control knobs and bezels guarantees against water infiltration.

## EASY ON THE ENVIRONMENT

- 98% recyclable by weight.
- CFC free packaging.



# Electrolux

**700XP  
Infrared Cooking Tops**

	<b>E7IRED2000 371024</b>	<b>E7IREH4000 371025</b>	<b>E7IRED200N 371133</b>	<b>E7IREH400N 371134</b>
<b>TECHNICAL DATA</b>				
Power supply	Electric	Electric	Electric	Electric
External dimensions - mm				
width	400	800	400	800
depth	730	730	730	730
height	250	250	250	250
Back plate dimensions - mm	Ø 230	Ø 230, Ø 230	Ø 230	Ø 230, Ø 230
Back plates power - kW	2.2	2.2, 2.2	2.2	2.2, 2.2
Front plates dimension - mm	Ø 230	Ø 230, Ø 230	Ø 230	Ø 230, Ø 230
Front plates power - kW	2.2	2.2, 2.2	2.2	2.2, 2.2
Total Power - kW	4.4	8.8	4.4	8.8
Net weight - kg.	15	35	15	35
Supply voltage	400 V, 3N, 50/60	400 V, 3N, 50/60	230 V, 3, 50/60	230 V, 3, 50/60
<b>ACCESSORIES</b>				
2 SIDE COVERING PANELS H=250-D=700-ELUX	216277	216277	216277	216277
CHIMNEY UPSTAND 400MM	206303		206303	
CHIMNEY UPSTAND 800MM		206304		206304
FRONTAL HANDRAIL 1200 MM	216049	216049	216049	216049
FRONTAL HANDRAIL 1600 MM	216050	216050	216050	216050
FRONTAL HANDRAIL 400 MM	216046		216046	
FRONTAL HANDRAIL 800 MM	216047	216047	216047	216047
LARGE HANDRAIL(PORTIONING SHELF)400 MM	216185	216185	216185	216185
LARGE HANDRAIL(PORTIONING SHELF)800 MM	216186	216186	216186	216186
SIDE HANDRAIL-RIGHT/LEFT HAND-700 LINE	206307	206307	206307	206307
SUPPORT FOR "BRIDGE" SYSTEM 1000 MM	206138	206138	206138	206138
SUPPORT FOR "BRIDGE" SYSTEM 1200 MM	206139	206139	206139	206139
SUPPORT FOR "BRIDGE" SYSTEM 1400 MM	206140	206140	206140	206140
SUPPORT FOR "BRIDGE" SYSTEM 1600 MM	206141	206141	206141	206141
SUPPORT FOR "BRIDGE" SYSTEM 400 MM	206154		206154	
SUPPORT FOR "BRIDGE" SYSTEM 800 MM	206137	206137	206137	206137
WATER COLUMN EXTENSION FOR 700 LINE	206291	206291	206291	206291
WATER COLUMN WITH SWIVEL ARM	206289	206289	206289	206289

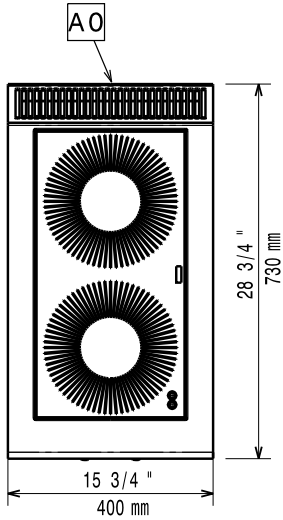
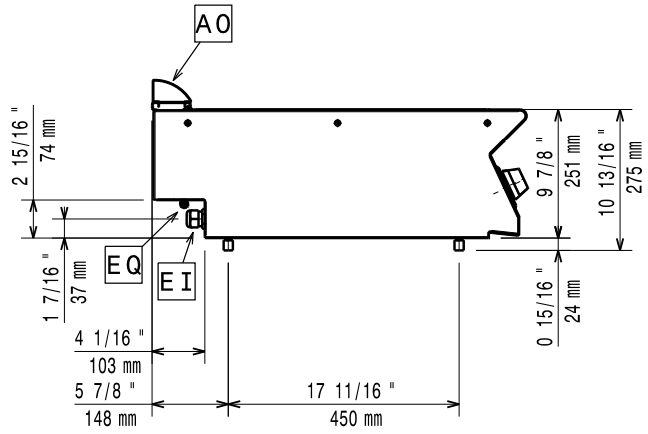
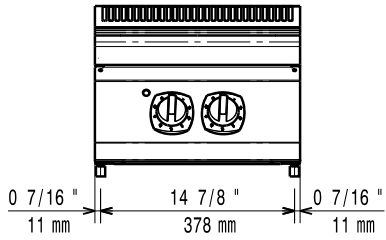
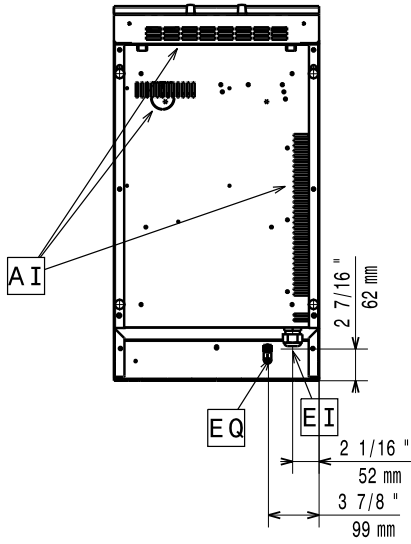
CHDA010

2011-07-07

Subject to change without notice

700XP  
Infrared Cooking Tops

371024, 371133



**LEGEND**

EI - Electrical connection

**E7IRED2000**  
**371024**

400 V, 3N, 50/60

**E7IRED200N**  
**371133**

230 V, 3, 50/60

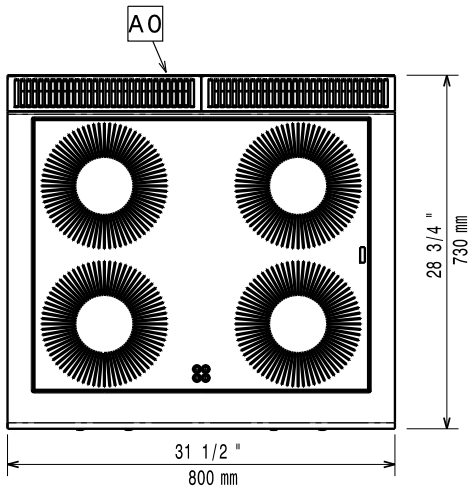
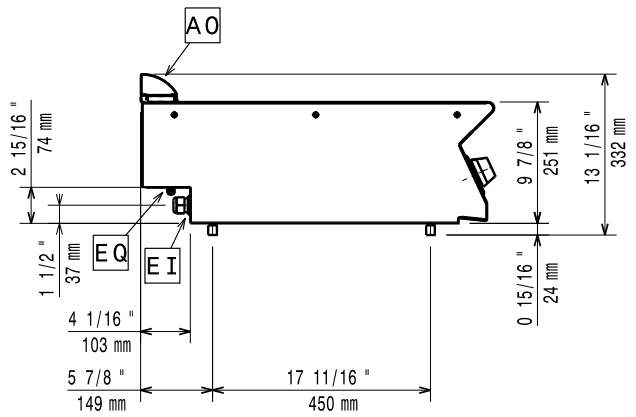
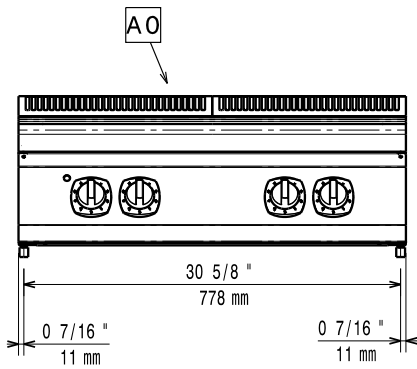
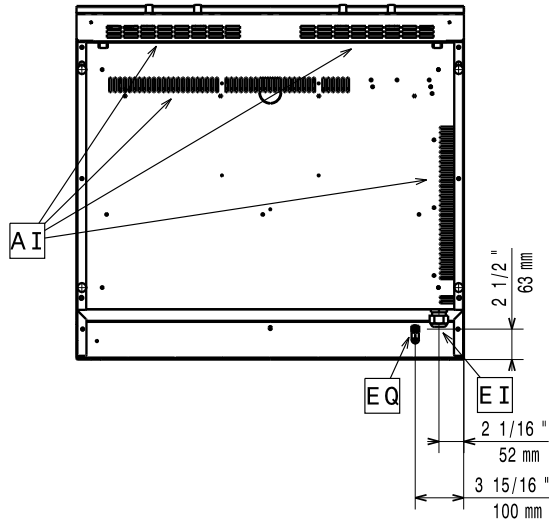
CHDA010

2011-07-07

Subject to change without notice

**700XP  
Infrared Cooking Tops**

371025, 371134



LEGEND	E7IREH4000 371025	E7IREH400N 371134
	EI - Electrical connection	400 V, 3N, 50/60

CHDA010

2011-07-07

Subject to change without notice